

Anytime a Threat Develops

Anywhere a Threat Develops

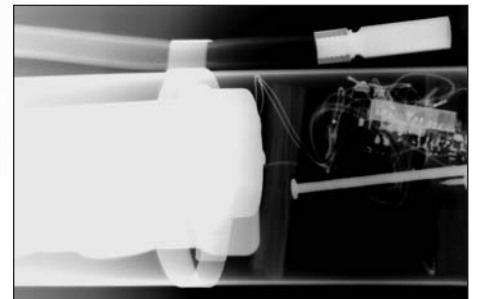


ScanX[®] 12 Portable *When Seconds Count...*

The ScanX 12 Portable brings you Computed Radiography (CR) in its most transportable form. Reusable phosphor storage plates capture the latent image. In seconds you are viewing a detail-rich X-ray of the device on your laptop computer.

No need for manual equalization ... our software does that for you automatically. Easy to use enhancement tools let you bring out all of the information that you need to make critical decisions.

- Lightweight. Portable – just 37 lbs.
- Operates even in sunlight.
- Built-in eraser. One scan read & erase.
- 3.8 or 5.0 lp/mm high resolution images.
- No warm-up required. 35 sec. scan time for 10"x12" plate.
- 50-60 Hz, 90-235 VAC. Global operation.
- U.S. manufacturer - 46 years in business.



 **ALLPRO** IMAGING
THE IMAGING EXPERTS

Specifications

Dimensions (WxDxH):	17" x 17" x 16.5"
Weight:	37 lbs.
Electrical:	115V, 60 Hz
Laser Classification:	Class 1 Laser Product. Compliance with FDA HHS 21 CFR 1040.10 and IEC 60825-1
Imaging Media:	Phosphor Storage Plates. Sizes 12"x17", 7"x17", 10"x12", 8"x10", 6"x12", 5"x12". Other sizes available
System Includes:	Power Supply Cord and USB Computer Connector Cord, Soft Case
Software:	Tigerview certified imaging software for acquisition, viewing and storage
Environmental:	Operating: 0 to 104° F, Storage and Transport: -21 to 130° F
Humidity:	5 to 95% RH, non-condensing

Minimum Computer Requirements to Operate ScanX and EOD Software

CPU Speed:	Pentium PC; 2.0 GHz or higher
Operating System:	Windows 2000 Service Pack 4 or later, or XP Pro Service Pack 2 or later
RAM:	512 MB
Hard Drive:	60 GB or higher
CD ROM Drive:	CDR/RW
Monitor:	SVGA , 1024x768 or higher resolution
Video Display Adapter:	32 MB RAM or higher
Keyboard, Mouse:	Standard
Backup Device:	Recommended for daily saving
Surge Protector:	Recommended
USB Port:	USB 1.1 or higher. USB 2.0 preferred
Printer:	Optional

