

scan-x Pro

— COMPUTED RADIOGRAPHY SYSTEM —

The only portable **ALL IN ONE Scanner**



Dual**Foc**
TECHNOLOGY *

www.allpro-imaging.com

ALLPRO
IMAGING
equipped for life™

WHAT IS CR? HOW DOES IT WORK?

Basics

Computed Radiography (CR) provides digital replacement of conventional analog X-ray film while maintaining the practice's existing workflow. This solution is more eco-friendly and reduces the time until the doctor has a diagnosable image. In addition, digital images can be shared directly with other users and easily archived.

Key advantages of CR include:

- IP's are reusable
- No dark room or chemicals required
- Exposure and processing times reduced
- Easy workflow and image optimization with imaging software
- Simple to share and archive digital information

CR technology consists of a 3-step process

The image plate (IP) is exposed with X-ray radiation, which causes the phosphor layer in the plate to store the latent image.

During the reading process, a focused laser beam in the scanner releases the latent image information stored on the plate in the form of visible light photons.

The emitted light is detected, captured and converted into electrical signals, which are digitized and then displayed as a digital image on the PC monitor.

The internal in-line eraser removes the residual data from the IP, which is then ready for the next exposure.

Finely Focused Laser

The finely focused laser beam plays a crucial role when high resolution images are needed. To illustrate, imagine trying to draw a fine stroke with a broad brush.

This principle is the same for scanning with a fine laser beam. The finest lesions or fractures are visible only with a tightly-focused laser beam.

Why CR technology from ALLPRO Imaging?

With thousands of installations worldwide, ALLPRO Imaging is dedicated to providing our customers superior products supported by professional customer relations and expert technical support.

All image plate scanners from ALLPRO Imaging are distinguished by using the finest focused laser beam for scanning in their device class.

- ▶ HIGH RESOLUTION
- ▶ SPECIFICALLY FOR VETS
- ▶ COST REDUCTION
- ▶ IMPROVED WORKFLOW
- ▶ INCREASED EFFICIENCY



Benefit

Significant reduction of consumables



Acceptance

Perfect image quality – film-like or better



VET-specific

Intuitive operation, focused on the veterinary practice



Efficient

Workflow tailored to your needs

DUAL FOCUS TECHNOLOGY - WHAT ARE THE ADVANTAGES?



What is DualFoc technology?

Normally, image plate scanners only have a fixed laser beam diameter for capturing data from image plates.

With the new DualFoc technology from ALLPRO Imaging, new optics make it possible for the first time to set two different laser beam diameters within the same scanner.

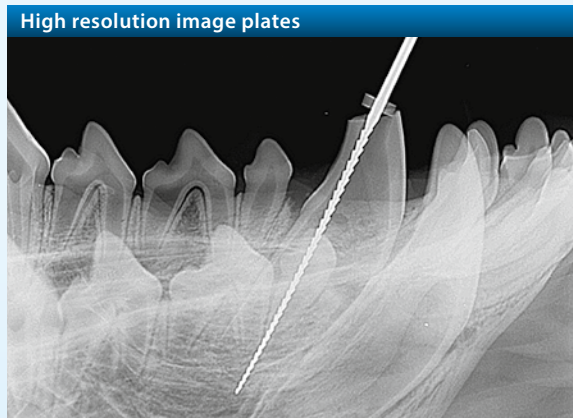
What is the advantage of this?

Unlike all other devices on the market, the ScanX Pro is the only scanner to fully utilize the properties of both the intraoral and extraoral image plates that are used.

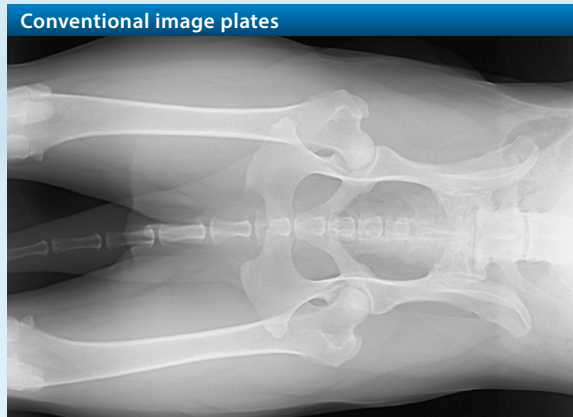
Being limited to just one permanently set laser beam diameter for the scanning of the image plate means you are forced to find a compromise between high resolution and low signal noise. Through the use of two different foci, it becomes possible for the first time to define perfect parameters both for high-resolution intraoral plates and for the plates generally used for full-body images.

The operating principle

High resolution blue image plates for dental radiography are read automatically with a 12.5 µm focused laser beam. In this way images of a previously unachievable level of detail can be created.



When conventional image plates are used for non-dental radiography, the laser beam diameter is focused to 50 µm, which guarantees brilliant low-noise images.



Crystal clear

Automatic laser adjustment for low-noise images



Intraoral

High resolution images for safe results



Wireless LAN

Wireless connection to the network



Experience

Technology proven in more than 25.000 units

IMPRESSIVE FUNCTIONS IN A SINGLE DEVICE

Integrated display and mini-PC

In combination with the built-in mini-PC, the high resolution full-color display, integrated into the housing, allows this device to be operated fully independently.

Internal storage or direct data transfer

For mobile operation, an SD memory card with up to 32 GB capacity can be used, enabling you to store several hundred images. For stationary operation, you can choose between WLAN or an Ethernet connection.

Battery operation

Using the optional external battery, it is possible to operate the device fully independently for a whole day.

- HIGH RESOLUTION DISPLAY
- INTEGRATED MINI-PC
- FULLY INDEPENDENT OPERATION

Integrated mini-PC

Built-in mini-PC with up to 32 GB storage.

Touch-Display

If required, the entire device can be controlled via the high-definition color touchscreen.



Ultra-portable

Weighing just 17.5 kg (38.5 lbs) the Pro is the lightest compact scanner worldwide. The unit, transport case and battery pack has a total weight just under 28 kg (62 lbs).

THE WORKFLOW

Stationary operation

During stationary operation, all functions are controlled via the connected PC. Here the integrated touch screen enables the user to check patient and workflow.

Mobile operation

During mobile operation, the user is guided through the entire imaging process by easy-to-understand pictograms on the integrated touch screen.

At the end of the process, the X-ray image that has been captured is displayed on the screen as a preview. On

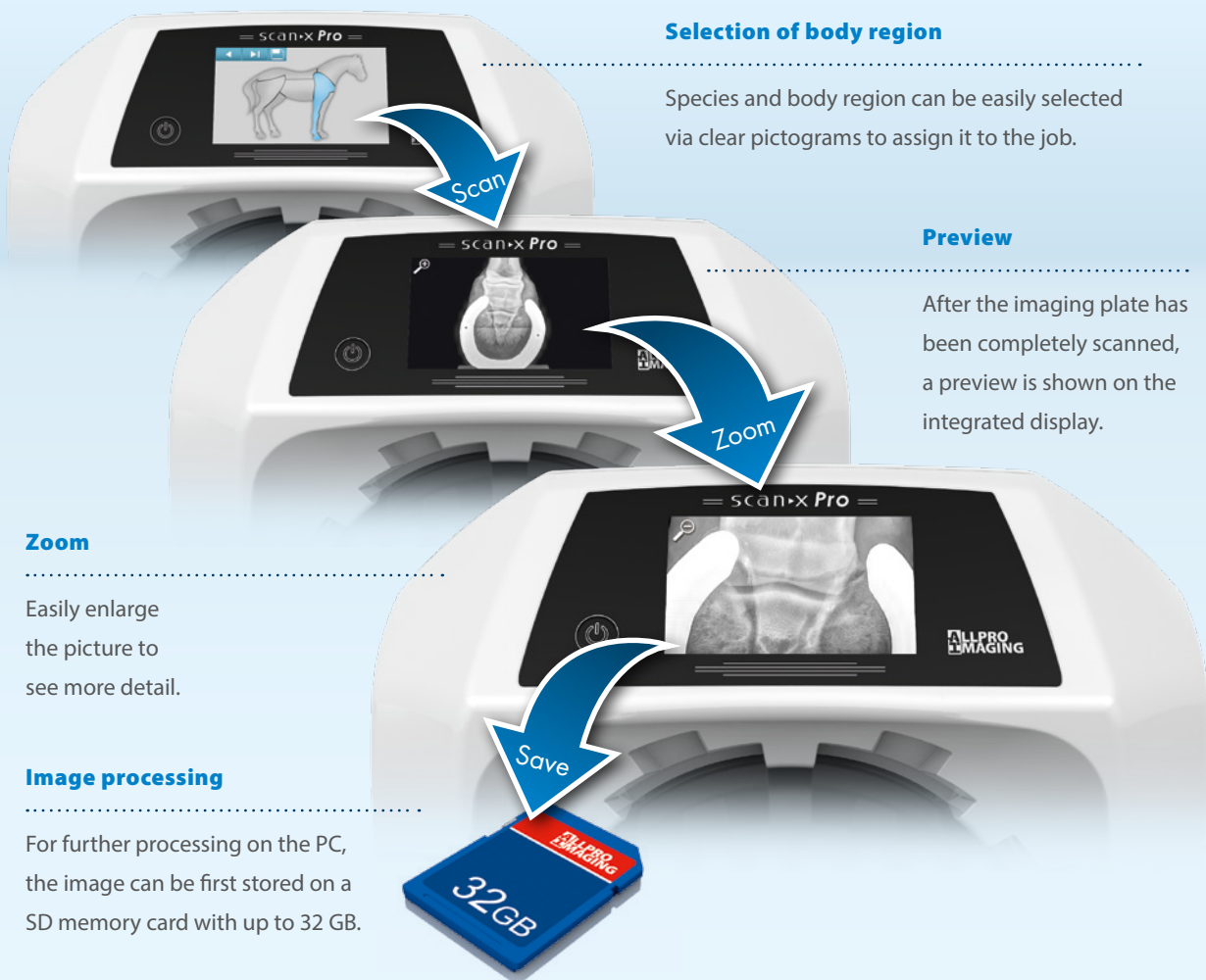
the basis of this preview image, you can decide whether the image is a successful one or if another exposure needs to be taken.

▶ ONE DEVICE FOR EVERYTHING

▶ INTUITIVE OPERATION

▶ FLEXIBLE USE

Mobile operation without PC or Laptop



Selection of body region

Species and body region can be easily selected via clear pictograms to assign it to the job.

Preview

After the imaging plate has been completely scanned, a preview is shown on the integrated display.

Zoom

Easily enlarge the picture to see more detail.

Image processing

For further processing on the PC, the image can be first stored on a SD memory card with up to 32 GB.

ScanX Pro // The only portable ALL IN ONE Scanner

TECHNICAL DATA	SCANX PRO
Dimensions (H x W x D)	40 x 37 x 47 cm / 15.8" x 14.6" x 18.5"
Weight	17.5 kg / 38.6 lbs 28 kg / 62 lbs (including transport case and battery pack)
Electrical	100 - 240 V / 50 - 60 Hz, < 140 W
Laser spot	DualFoc technology, 12.5 µm (40 LP/mm) and 50 µm (10 LP/mm)
Grey levels	16 bit (65,536)
Max. Plate size	35 cm / 14" wide, length virtually unlimited
Laser class extern	I (EN 60825-1: 1994-03 + A1: 2002-07 + A2: 2001-03)
PC connection	Ethernet (TCP-IP protocol) or wireless LAN
Storage	SDHC, max 32 GB
Display	4.3" LCD - Touch
IT-Requirements	For requirements refer to www.allproimaging.com

ACCESSORIES

Transport Case

Lightweight case for scanner transport.



Battery pack

Lithium-ion battery for stand-alone operation.



Image plates (IP)

Image plates for every application. Dental image plates and cassettes in all standard sizes S0-S4. Special IPs for intraoral imaging of rabbits.



Authorized ALLPRO Imaging Dealer

ALLPRO Imaging

1295 Walt Whitman Road
Melville, NY 11747-3062
United States

Phone +1 516 433 7676
Fax +1 516 433 7684

mail@allpro-imaging.com
www.allpro-imaging.com

9922-429 Rev. C
Technical data subject to change.