



Software Installation Notes

The Polaris Drivers and Utilities Disk includes the latest USB device drivers and a demonstration program to help troubleshoot any problems you may encounter.

System Requirements

The Computer System (laptop or computer, monitor, etc.) and any related peripheral or other equipment, supplied by the user, or a third party, must comply with IEC 60601-1 and the resulting system must comply with IEC 60601-1 and/or IEC 60601-1-1 harmonized national standards when set-up within the immediate patient vicinity (ie. within 6 feet). Accessory equipment outside the patient vicinity must comply with IEC 60601-1 or IEC 60950-1 as allowed by IEC 60601-1-1.

The minimum computer system requirements necessary to operate the Polaris and Polaris Universal Intraoral Video Camera Systems are listed below:

- Operating System: Microsoft Windows 2000 Professional for an Intel 32-bit processor with Service Pack 4 and the KB 820759 update or later; or
Microsoft Windows XP Professional for an Intel 32-bit processor with Service Pack 1 and the KB 822603 update or later
- USB Port: USB 2.0 High-Speed, High-Power Port for Polaris; or
USB 2.0 High-Speed Port for Polaris Universal
- CPU: 2GHz Pentium-4
- System RAM: 256MB
- Display: 16MB Video Card supporting 800 x 600 pixels with 32-bit color
- Imaging Software: Authorized DirectX 9 compliant streaming video software application.

Installing the Software

NOTE: You must have Administrative privileges in order to install the device drivers and utilities.

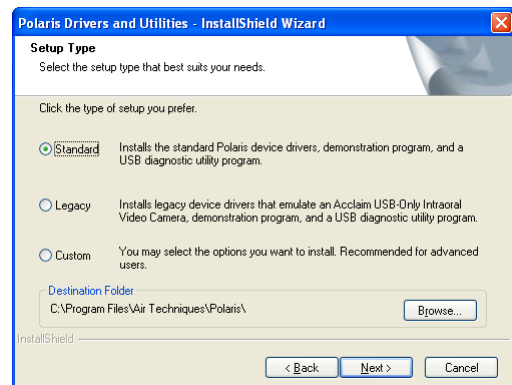
You must use the installation program to install the device drivers and, optionally, the utilities including the demonstration program.

The installation program can be started from the menu that automatically starts when the Drivers and Utilities disk is inserted into your CD-ROM player. From the menu, click on “Install the Polaris Drivers and Utilities” to start the installation program.

Alternatively, to start the installation program, double-click on the file named “Polaris.exe” located in the root directory of the disk, typically “D:\Polaris.exe”.

Two types of installation are available. The Standard installation is designed to work with most current, authorized third-party application software and should generally be used.

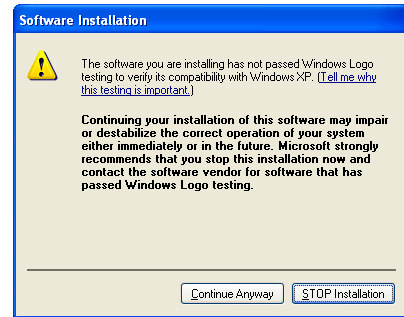
Certain older versions of third-party application software that were designed to work with the Acclaim camera and have not been updated may not work properly with Polaris. A set of legacy device drivers are available that make the Polaris emulate an Acclaim camera and work with these legacy applications. If you encounter problems using the buttons with your software, you may want to try the Legacy installation. Please consult the Air Techniques web-site for the list of authorized software and information on which versions require the legacy device drivers.



During the installation, the selected device drivers will be preloaded. Windows may report that the software has not passed Windows Logo testing. Press the 'Continue Anyway' button to complete the installation.

When you connect your Polaris Intraoral Video Camera System to the computer and turn it on for the first time and each time that you plug the system into a different USB port, Windows will reinstall these device drivers. At this time, Windows may again report that the device drivers have not passed the Windows Logo testing. Press the 'Continue Anyway' button to allow the installation of the drivers to complete.

Depending on the peripherals installed on your computer, Windows may need to reboot after loading the drivers. After rebooting your computer, the Polaris Intraoral Video Camera System should operate correctly.



Changing or Removing the Software

NOTE: You must have Administrative privileges in order to change or remove the device drivers and utilities.

To change from a Standard to a Legacy installation or to remove the software, run the installation program from the disk and select 'Modify' or 'Remove'.

Alternatively, from the 'Start' button, select 'Settings' and then 'Control Panel'. In the 'Control Panel' window, double-click the 'Add or Remove Programs' icon. In the list of currently installed programs, locate the 'Polaris Drivers and Utilities' and press the 'Change' or 'Remove' button.